

USER MANUAL

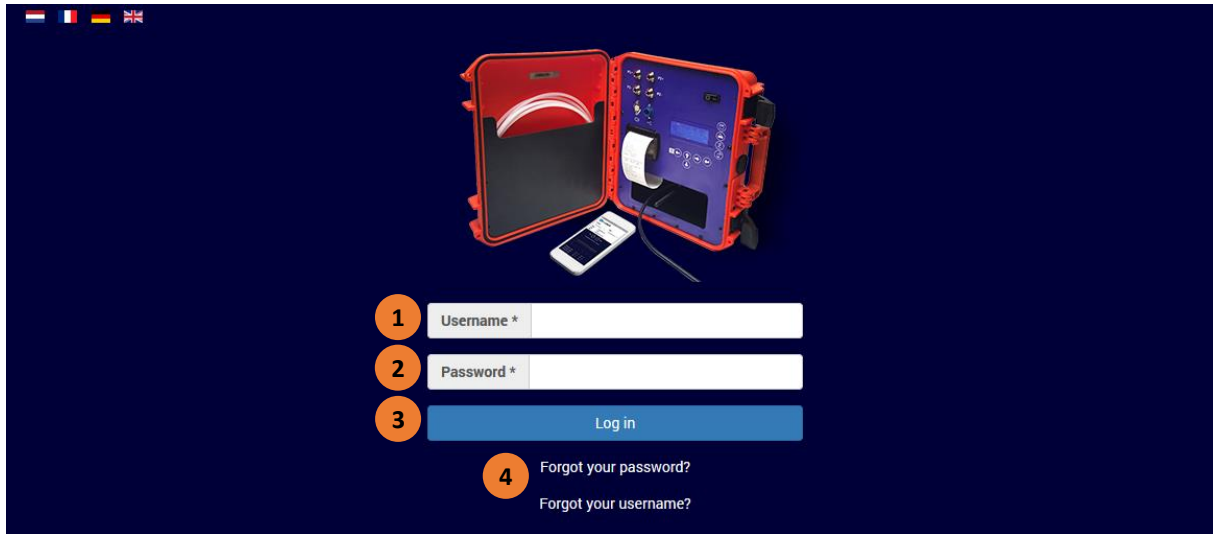
AIRTOCHECK WEBSITE



Logging in	2
forgot your password?.....	3
forgot your user name?	3
live view / current measurement data	4
monitor settings	5
dashboard	6
user management.....	6
create new user	7
my company	8
projects	9
monitors (cases)	9
view data history (view measurement data).....	10
view measurement data on the screen.....	10
import measurement data from sd card	11
actions on the monitor / the computer:.....	11
actions on the website.....	11
create project	12
user manuals.....	12

Last updated: 23 May 2017

LOGGING IN

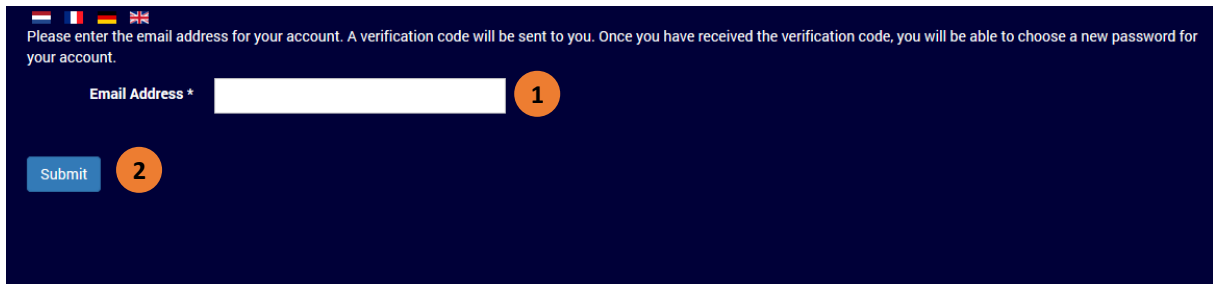


1. Enter your **user name** here
2. Enter your **password** here
3. Click on **Log In**

You are now logged in with your personal account.

4. If you forgot your password, click on **Forgot your password?**
If you forgot your user name, click on **Forgot your user name?**

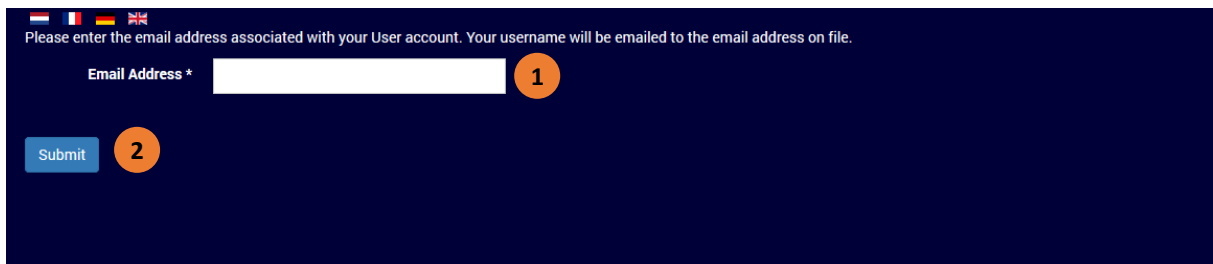
FORGOT YOUR PASSWORD?



1. Enter your **Email Address** here
2. Click on **Submit**

You will receive a link with further information by email from Airtocheck within several minutes.

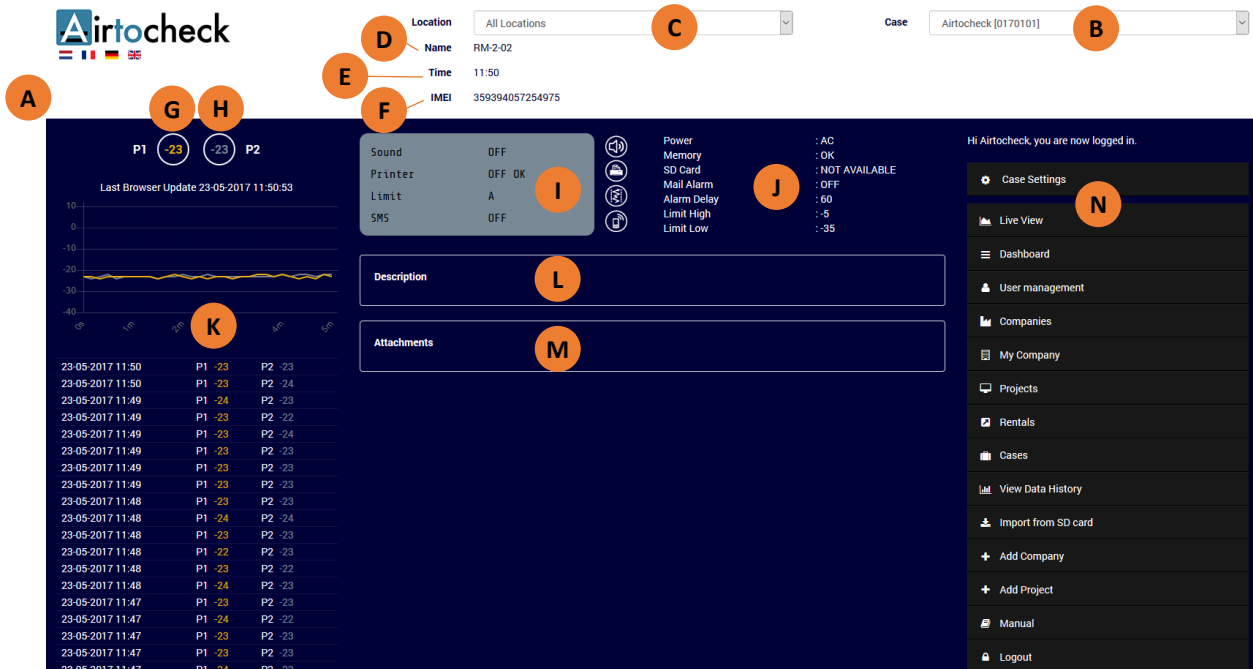
FORGOT YOUR USER NAME?



1. Enter your **Email Address** here
2. Click on **Submit**

You will receive a link with further information by email from Airtocheck within several minutes.

LIVE VIEW / CURRENT MEASUREMENT DATA



- A. Logo of your company. This can be changed via “My Company” (see page 8).
- B. Choice of all available monitors.
- C. Choice of all available locations.
- D. Name / Project number. This is entered in the monitor.
- E. Time of the monitor.
- F. IMEI number of the monitor.
- G. Pressure channel 1 displays.
- H. Pressure channel 2 displays.
- I. Monitor information:
 - 1) Horn : ON / OFF
 - 2) Printer : ON / OFF
 - 3) Measurement limit : A / B / C / D / E
 - 4) SMS : ON / OFF
- J. Monitor information:
 - 1) Power : AC / BAT
 - 2) Memory : OK / ATT
 - 3) SD card : OK / ATT
 - 4) Mail alert : ON / OFF
 - 5) Alert delay : __ seconds
 - 6) High limit : __ pascals
 - 7) Low limit : __ pascals
- K. The measurement values of the last 5 minutes are displayed here.
- L. Description of the monitor.
- M. Appendices imported from the SD card
- N. Navigation menu.

MONITOR SETTINGS

CASE SETTINGS [AIRTOCHECK]

Hi Airtocheck, you are now logged in.

Alarm Email

1

Enter multiple email addresses comma separated, for example: example@example.com,example@...

Case Name

2

Notes

3

Monitoring
Enable this to monitor your case. You'll receive an email when the case did not send data for the given interval.

Interval (in minutes)

5

After the interval has been reached and no data has been received within the interval, you'll get an email every time the interval has been reached again.

ALARM DELAYS
All delays are in full minutes.

Email Delay

6

Desktop / App Delay

7

Save
Back

Case Settings

< Back

📺 Live View

📊 Dashboard

👤 User management

🏢 Companies

📁 My Company

📁 Projects

📁 Rentals

📁 Cases

📄 View Data History

📁 Import from SD card

+ Add Company

+ Add Project

📖 Manual

🔒 Logout

1. Enter your **email address** here to receive alerts. Entering multiple email addresses is possible if these addresses are separated by commas.
2. Enter the **name of the monitor** here.
3. A **note** can be added here.
4. Check the box to receive **alerts** if no measurement data is received from the monitor.
5. Enter the **delay time** (in whole minutes) to receive an **alert** if no measurement data is received from the monitor.
6. Enter the **delay time for alerts per email** (whole minutes).
7. Enter the **delay time for alerts on the website and Airtocheck app** (in whole minutes).
8. Click on **Save** to save the settings.

Dashboard

DASHBOARD

Hi Airtocheck, you are now logged in.

COMPANY

Airtocheck bv
 Waarderveldweg 89
 2031 BK Haarlem
 Netherlands
 088 - 56 65 405

CASES

Name	Case IMEI	Created On
Airtocheck	0170101	31-03-2017

PROJECTS

#	Title	Location	Created On
41	Project Alpha	Hoofdkantoor Alpha	19-04-2017

USERS

#	Username	Name	Email	Registered On
1034	info@airtocheck.com	Airtocheck	info@airtocheck.com	31-03-2017 09:22

Navigation menu (E):

- Back
- Live View
- Dashboard
- User management
- Companies
- My Company
- Projects
- Rentals
- Cases
- View Data History
- Import from SD card
- Add Company
- Add Project
- Manual
- Logout

- A. Your company information
- B. Overview of the available monitors.
- C. Overview of your current projects.
- D. Overview of the users.
- E. Navigation menu.

USER MANAGEMENT

USERS

Hi Airtocheck, you are now logged in.

Create new user (1)

#	Username	Name	Email	Registered On	Actions
1034	☆ info@airtocheck.com (A)	Airtocheck	info@airtocheck.com	31-03-2017 09:22	Edit (2)

Navigation menu (B):

- Back
- Live View
- Dashboard
- User management
- Companies

1. Click on **Create** new user to create new users.
2. Click on **Edit** to edit the data of a user.

- A. Main user
- B. Navigation menu

CREATE NEW USER

CREATE USER

The user will be placed in your company and may use the application.

Hi Airtocheck, you are now logged in.

Full Name

John Doe

Email Address

john.doe@mia-enterprises.net

Password

.....

Repeat Password

.....

Create User **Back**

< Back

Live View

Dashboard

User management

Companies

My Company

Projects

Rentals

Cases

1. Enter the **name** of the new user here.
2. Enter the **email address** of the new user here.
3. Enter the **password** of the new user here.
4. Enter the **password** of the new user again.
5. Click on **Create User**

MY COMPANY

MY COMPANY

Name

Description

Street

Zipcode

City

Country

Phone

Logo

8
Bladeren... Geen bestand geselecteerd.

Allowed image extension is jpg.

9
Save

Hi Airtocheck, you are now logged in.

- < Back
- 🏠 Live View
- ☰ Dashboard
- 👤 User management
- 🏢 Companies
- 📄 My Company
- 🖨 Projects
- 📄 Rentals
- 📁 Cases
- 📊 View Data History
- 📁 Import from SD card
- + Add Company
- + Add Project
- 📖 Manual
- 🔒 Logout

1. Change the **company name** here, if necessary.
2. Enter a **description** here, if necessary.
3. Change the **address** here, if necessary.
4. Change the **postal code** here, if necessary.
5. Change the **city** here, if necessary.
6. Change the **country** here, if necessary.
7. Change the **telephone number** here, if necessary.
8. Click on **Browse** to change the company logo, if necessary (format: jpg).
9. Click on **Save**.

PROJECTS

- A. Overview of active projects.
- B. Overview of archived projects.

1. Click on **Create Project** to create a new project.
2. Click on **Archive** to archive the project.

MONITORs (CASES)

- A. Overview of active monitors.
- B. Overview of inactive monitors.

1. Click on the **Name** or **IMEI number** to go to the Live View of the monitor.
2. Click on **Rent** to lease the monitor for a specific period.
3. Click on **Transfer** to permanently transfer the monitor (sell it).
4. Click on **History** to view the (owner) history of the monitor.
5. Click on **Delete** to remove the monitor from the system.

VIEW DATA HISTORY (VIEW MEASUREMENT DATA)

1. Select a **monitor**.
2. Enter the **Monitor project number** and click the **Search button** to find a monitor project number (entered in the monitor).
3. Select a **starting date** for the retrieval of the measurement data from this date onwards. (You can press TAB on your keyboard to go to the next field).
4. Select or type a **starting time** for the retrieval of the measurement data from this date onwards.
5. Select or type an **end date** for the retrieval of the measurement data.
6. Select or type an **end time** for the retrieval of the measurement data up to this time.
Please note: enter a maximum time frame of 7 days.
7. Use the **Today** button to quickly generate a 24-hour report.
The system will then fill in today's date, as well as the time from 00:00 to 23:59. This data can be manually adjusted, if desired.
8. Use the **View history** button to display the measurement data on the screen.
9. Use the **Generate report** button to display the measurement data in:
 - a PDF (can be downloaded immediately after the report has been generated)
 - a PDF containing only graphs (can also be downloaded immediately)
 - CSV file; to be used in Excel, for example (can downloaded immediately)

[View measurement data on the screen](#)

If **View history** (8) was selected, the data (A) and graph (B) will be displayed on the screen.

IMPORT MEASUREMENT DATA FROM SD CARD



Actions on the monitor / the computer:

1. Copy the internal measurement data from the monitor to the SD card (via the menu on the monitor).
2. Insert the SD card into the computer.

Actions on the website

3. Select the **monitor** that you want to link the measurement data to.
4. **Browse** to the relevant file and select it. You can click on either OK or Open (depending on the type of computer used)
5. Confirm the import by clicking the **Import** button.
6. Check if the measurement data has been successfully added to the selected monitor. To do so, go to **Appendices** on the **Live View (A)** screen.
7. Remove all files from the SD card afterwards!

CREATE PROJECT

CREATE PROJECT

You can create a new project to assign cases and users to.

Title

Project Alpha 1

Description

Lorem ipsum dolor sit amet tanto. 2

Location

Select a location from the list or fill in a new location. If a new location is specified, the selected list item will be ignored!

Hoofdkantoor Alpha 3

New location

Users

Airtocheck () x 4

The selected users will get access to this project.

Cases

Select Some Options 5

The selected cases will be assigned to this project and will not be available in other projects unless the case is removed from the project.

Create
Back

Hi Airtocheck, you are now logged in.

- [< Back](#)
- [🏠 Live View](#)
- [☰ Dashboard](#)
- [👤 User management](#)
- [🏢 Companies](#)
- [📄 My Company](#)
- [📁 Projects](#)
- [📅 Rentals](#)
- [📁 Cases](#)
- [📊 View Data History](#)
- [📁 Import from SD card](#)
- [+ Add Company](#)

1. Enter the name (**title**) of the project.
2. Add an extra **description** of the project, if necessary.
3. Select an **existing location** or add a **new one**.
4. Select the **user(s)** who will be granted access to the project.
5. Select the **monitor** that needs to be assigned to the project.
6. Click the **Create** button.

USER MANUALS

MANUAL

WILL BE TRANSLATED SOON.

- [📄 Download Dutch manual | Monitor](#)
- [📄 Download German manual | Monitor](#)
- [📄 Download English manual | Monitor](#)
- [📄 Download French manual | Monitor](#)
- [📄 Download Verwerk_csv-bestand_V1.1.zip](#)
- [📄 Download Notepad++](#)

- [☰ Dashboard](#)
- [👤 User management](#)
- [🏢 Companies](#)
- [📄 My Company](#)
- [📁 Projects](#)
- [📅 Rentals](#)
- [📁 Cases](#)

Download the available files here.

INDEX

active monitors.....	9	main user	6
active projects	9	measurement limit	4
alert delay.....	4	measurement values	4
alert delay time	5	memory.....	4
appendices	11	monitor history	9
archive project.....	9	monitor project number	10
archived projects.....	9	monitor settings.....	5
available locations	4	monitors.....	9
available monitors	4, 6	my company	8
city of the company	8	name of the monitor.....	5
company address.....	8	new user	7
company description	8	note.....	5
company information.....	6	password.....	2, 7
company name.....	8	password forgotten	2, 3
company postal code	8	pdf report.....	10
company telephone number.....	8	power.....	4
country of the company	8	pressure channel 1.....	4
create project	9	pressure channel 2.....	4
create project	12	printer	4
create user.....	6	project number	4
current projects.....	6	projects	9
delete monitor.....	9	receive alerts.....	5
edit user.....	6	sd card.....	4, 11
email address	5, 7	sell (the monitor)	9
end date	10	sms.....	4
end time	10	starting date.....	10
export csv file	10	starting time.....	10
generate report	10	time	4
high limit.....	4	today (24-hour report).....	10
horn	4	transfer	9
imei number	4, 9	user management.....	6
import sd card	11	user manuals.....	12
inactive monitors.....	9	user name	2
lease monitor	9	user name forgotten.....	2, 3
log in	2	users.....	6
logo.....	4	view data history	10
low limit.....	4	view history.....	10
mail alert.....	4	view measurement data	10

Questions?

Airtocheck bv
 Waarderveldweg 89
 2031 BK Haarlem
 (+31) (0)88 56 65 405